

Operating Instructions and Parts List
for

Chandler & Price Pilot Press

Serial No. _____

THE CHANDLER AND PRICE

PILOT PRESSES

● Standard equipment on the Chandler & Price Pilot Press includes a single disc, depressible grippers, one semi-steel chase, one wrench, two cast rollers, four roller trucks, upper feed board and delivery board. Can be equipped with small fountain if desired.

● The inside measurements of the chase are 6½ by 10 inches.

● The total weight of this press, boxed ready for shipment, is 210 pounds. Immediate delivery can be made from stock.



CARDS, tickets, programs, menus and other jobs to be run in small quantities can be printed economically on this thoroughly efficient little press. It is a hand operated press, designed to be mounted on a bench or cabinet. Little or no experience is required in its operation. It is quickly made ready, easily handled and the printing results secured are exceptionally fine for so small a press. The Chandler & Price Company, Cleveland, Ohio.



CHANDLER & PRICE

PRINTING PRESSES AND PAPER CUTTERS

INSTRUCTIONS FOR ASSEMBLING AND OPERATING THE CHANDLER & PRICE PILOT PRESS

Unpacking — after carefully unpacking, clean the dirt and grease from the Press. It is then ready to be set in position.

The set screw tied to the package on the press belongs to the hand lever.

The long hand lever is placed on the shaft which has a key tied to it with twine. After placing on shaft, tighten set screw securely. The lever can be placed on the opposite end of the shaft if more convenient for the operator. To do this, remove the collar and change ends with the handle.

Remove package tied to the press. This contains two (2) table brackets. The left hand bracket has a lug with a hole in it. In assembling, the long part of the spring rod goes into the hole in the lug, and the bottom of the bracket is placed on the shaft that has a nut to tighten the bracket against the frame. Place the right side bracket on the right side of the shaft and tighten with the shaft nut.

Put the ink disc in the hole in the disc bracket, then place the form rollers in the saddles after putting roller trucks on the ends of the rollers. Do not let form rollers rest on ink disc or form as rollers will become flat and ruined.

Fit the feed table to the brackets, by operating the press to get the clearance of the moving parts, such as the hand lever and platen. After the table is set in the correct position, screw the four wood screws through the brackets into the feed table. Oil the press with a good grade of machine oil and the press is ready to operate.

The chase is the steel frame in which the type form is locked. It is placed on the two lugs, just below the bed of the press, and held in place by the strong spring clamp at the top. When placing or removing the chase from the press, care must be taken not to injure the type or cuts in the form by striking them on the platen or grippers.

The platen is the metal surface on which is placed the sheet to be printed. It must be covered with a number of sheets of paper, which are held at the top and bottom by the tympan bales. This packing in the printer's language is called the tympan. The top sheet is a heavy oiled sheet of manila, and under it four (4) sheets of 50-pound S&SC book should be placed and clamped down tight by the tympan bales. Be sure these are tightly down, for if loose they may ruin the type and injure the press. If the form to be printed is a heavy one, it may be necessary to add a press-board under the top sheet. This board should not go under the tympan bales. It is best to take the first impression on the top sheet without a press-board under the tympan.

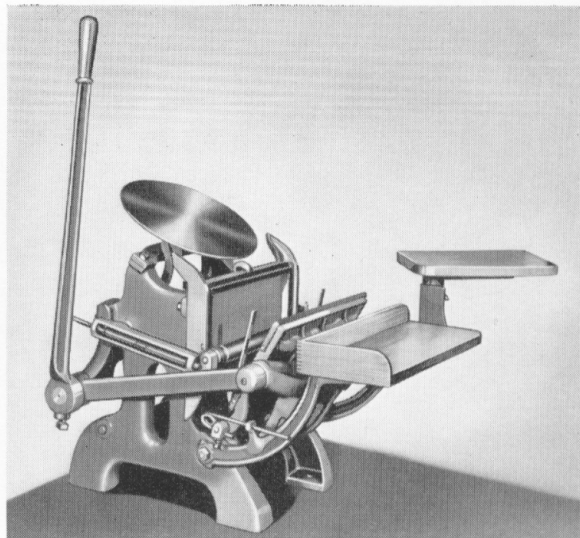
After pulling the impression under the tympan, mark the margins on the sheet to be printed and then set the gauge pins. Wash the ink from the impression on the tympan sheet and then pull an impression on the sheet of stock to be printed. If any letter or part of form does not print clearly, it must be made ready by spotting the low spots with tissue until all parts print evenly.

After printing each job, the form should be taken from the press and thoroughly cleaned. First dampen a cloth with cleaning fluid and wipe the ink from the form. Then scrub the form with a benzine brush saturated with gasoline after which the form should be wiped again with a soft dry cloth.

A word of caution: Be sure there are no buttons or pins in the rags as they will nick the type and scratch the cuts. The press and rollers should have the ink washed from them every evening. When washing the rollers always use kerosene as gasoline will cause the form rollers to crack.

**CHANDLER & PRICE
NEW MODEL
PILOT PRESS**

PARTS LIST



THE CHANDLER & PRICE CO., CLEVELAND 3, OHIO

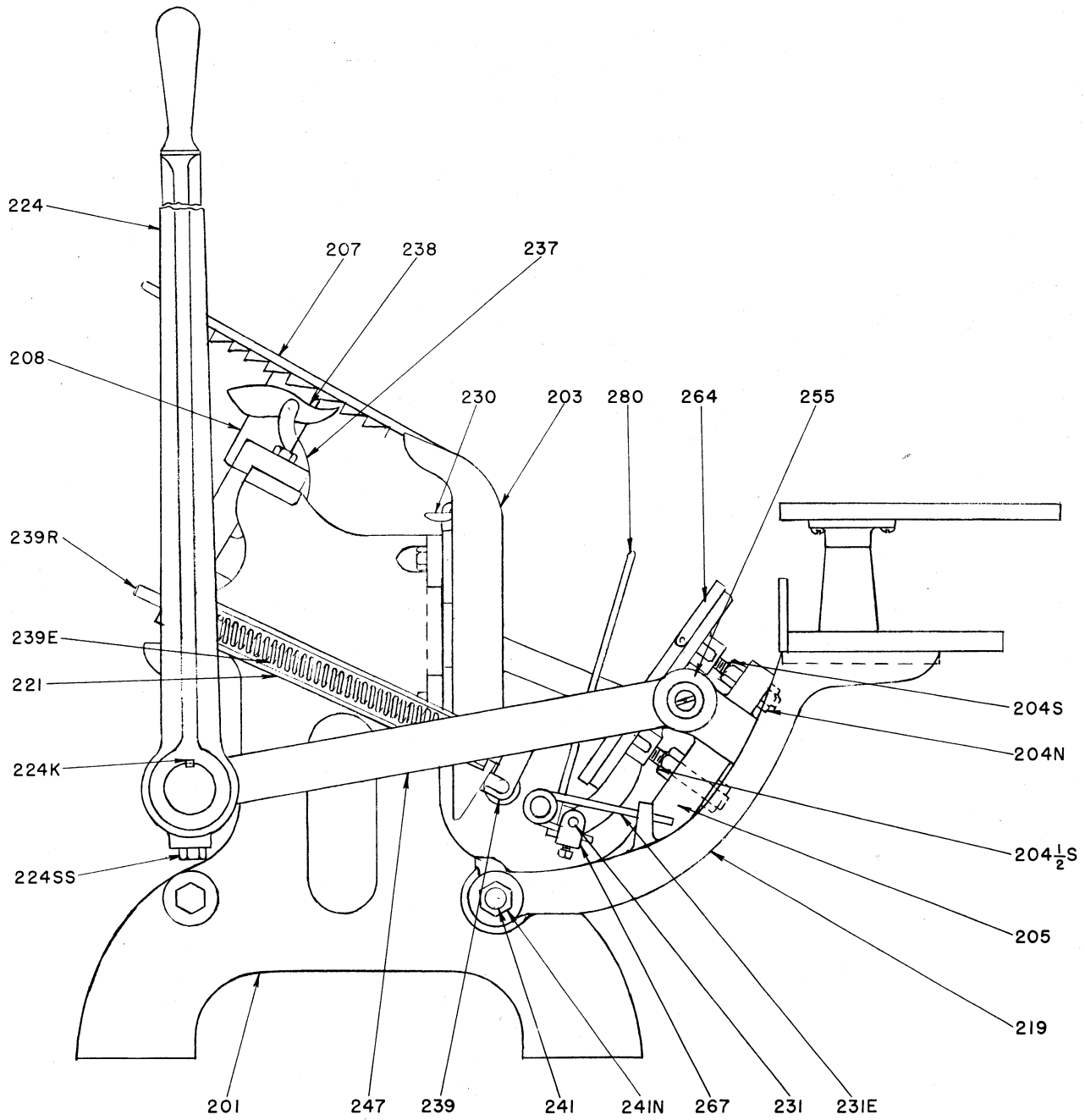


Figure 1

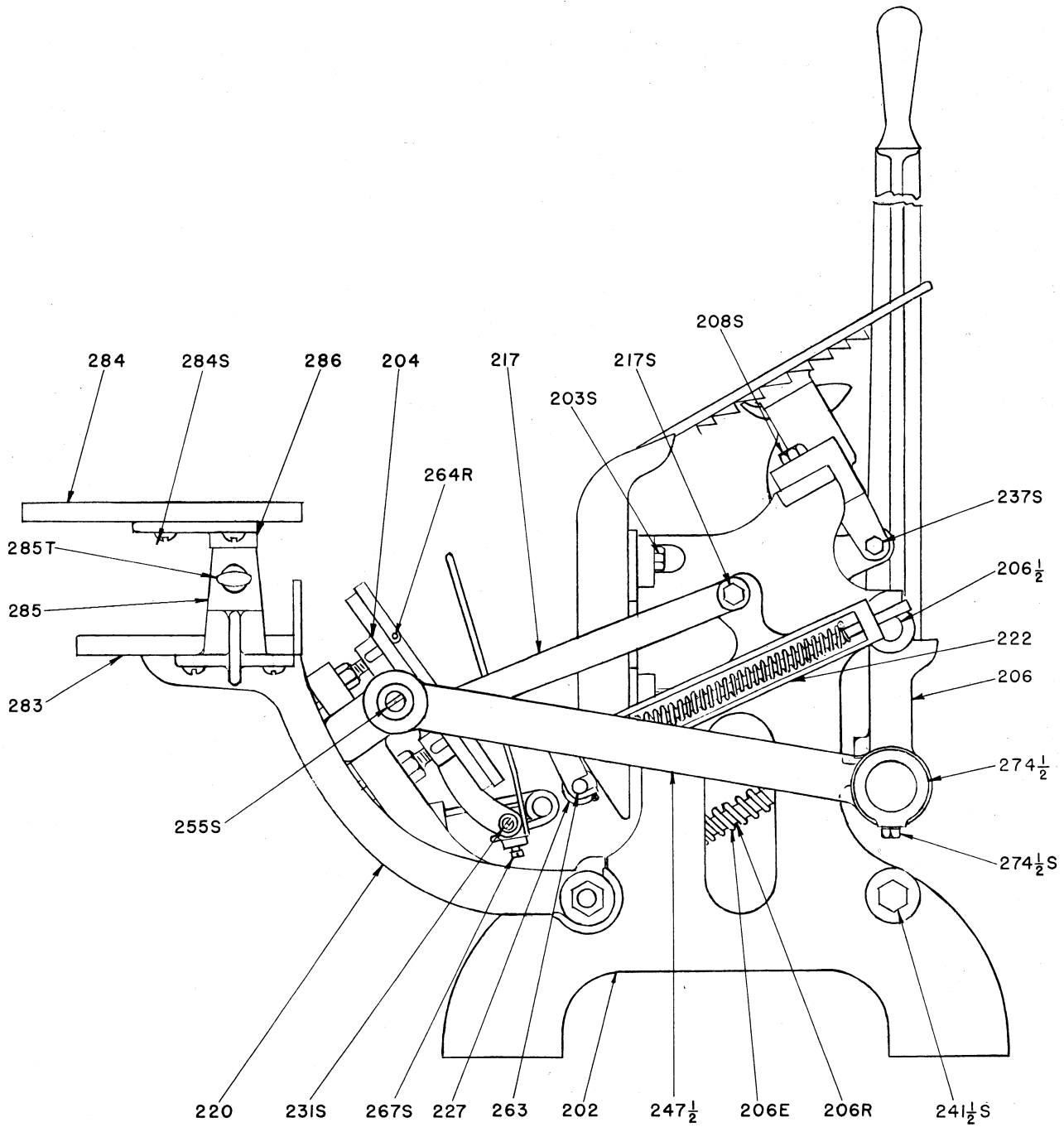


Figure 2

NEW MODEL PILOT PRESS PARTS

Number	Figure	Name	Number	Figure	Name
201	1	Left Side Frame	236 S	*	Disc Lever Cam Screw
202	2	Right Side Frame	237	1	Disc Lever
203	1	Bed	237 S	2	Disc Lever Screw
203 S	2	Bed Screw	238	1	Disc Lever Pawl
204	2	Platen	238 P	*	Disc Lever Pawl Pin
204 N	1	Impression Screw Nut	239	1	Saddle
204 S	1	Top Impression Screw	239 C	*	Roller Saddle Cotter
204 $\frac{1}{2}$ S	1	Bottom Impression Screw	239 E	1	Saddle Spring
205	1	Rocker	239 P	*	Roller Saddle Pin
206	2	Yoke	239 R	1	Saddle Rod
206 C	*	Yoke Spring Cotter	241	1	Front Brace Rod
206 E	2	Yoke Spring	241 N	1	Front Brace Rod Nut
206 R	2	Yoke Spring Rod	241 $\frac{1}{2}$	*	Back Brace Rod
206 $\frac{1}{2}$	2	Yoke Shaft	241 $\frac{1}{2}$ S	2	Back Brace Rod Screw
206 $\frac{1}{2}$ SS	*	Yoke Shaft Set Screw	245 P	*	Saddle Key Pin
207	1	Disc	247	1	Left Side Arm
208	1	Disc Bracket	247 $\frac{1}{2}$	2	Right Side Arm
208 S	2	Disc Bracket Screw	255	1	Side Arm Washer
217	2	Roller Arm	255 S	2	Side Arm Washer Screw
217 S	2	Roller Arm Screw	260	*	Wrench
219	1	Left Feed Table Bracket	263	2	Roller Stock
220	2	Right Feed Table Bracket	263 Cast	*	Cast Rollers
221	1	Left Roller Frame	263 P	*	Roller Retaining Pin
221 GP	*	Roller Saddle Guide Pin	264	1	Tympan Bale
221 P	*	Roller Frame Pin	264 R	2	Tympan Bale Rivet
222	2	Right Roller Frame	267	1	Gripper Spring Clamp
224	1	Lever	267 S	2	Gripper Spring Screw
224 K	1	Lever Key	269	*	Roller Shaft
224 SS	1	Lever Set Screw	269 P	*	Roller Shaft Pin
227	2	Ink Roller Truck	271	*	Roller Shaft Washer
228	*	Chase	274 $\frac{1}{2}$	2	Yoke Collar
230	1	Chase Hook	274 $\frac{1}{2}$ S	2	Yoke Collar Screw
230 E	*	Chase Hook Spring	280	1	Gripper
230 H	*	Chase Hook Spring Hanger	280 T	*	Gripper Screw
230 S	*	Chase Hook Screw	283	2	Lower Feed Table
231	1	Gripper Bar	283 S	*	Lower Feed Table Screw
231 E	1	Gripper Bar Spring	284	2	Upper Feed Table
231 S	2	Gripper Bar Screw	284 S	2	Upper Feed Table Screw
231 SS	*	Gripper Bar Set Screw	285	2	Upper Feed Table Bracket
234	*	Roller Mould Base	285 T	2	Upper Feed Table Bracket Thumb Screw
234 $\frac{1}{2}$	*	Roller Mould Tube	286	2	Upper Feed Table Fork
235	*	Roller Mould Star	286 P	*	Upper Feed Table Fork Stud
236	*	Disc Lever Cam			

* — Not shown on diagram.